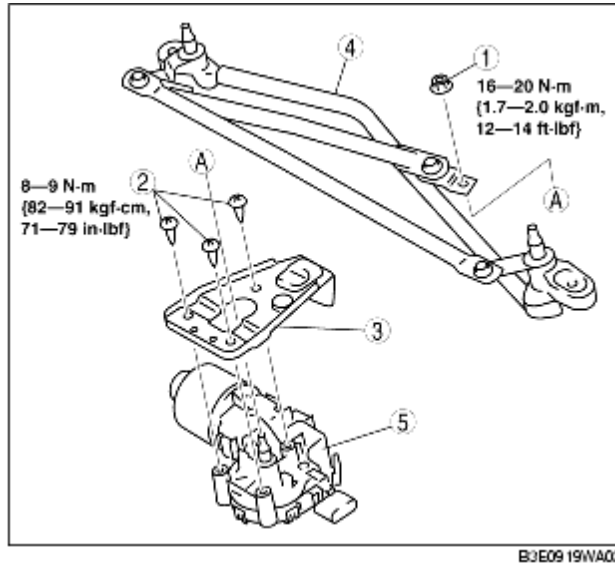


WINDSHIELD WIPER MOTOR ASSEMBLY/DISASSEMBLY [R.H.D.]

B3E091967340W04

1. Disassemble in the order indicated in the table.

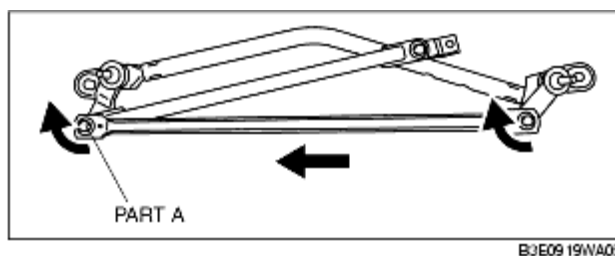


1	Nut
2	Screw
3	Bracket
4	Windshield wiper link
5	Windshield wiper motor (See Windshield Wiper Motor Assembly Note .)

2. Assemble in the reverse order of disassembly.

Windshield Wiper Motor Assembly Note

1. Connect the windshield wiper motor to the vehicle wiring harness connector. operate the windshield wipers and then stop them in the auto-stop position.
2. Rotate the windshield wiper link so that part A shown in the figure is as far to the left as possible.



3. Assemble the windshield wiper link and bracket to the windshield wiper motor.

4. Adjust the motor crank and wiper link No. 1 so that they are parallel with each other as shown in the figure and assemble them to the windshield wiper motor shaft.

